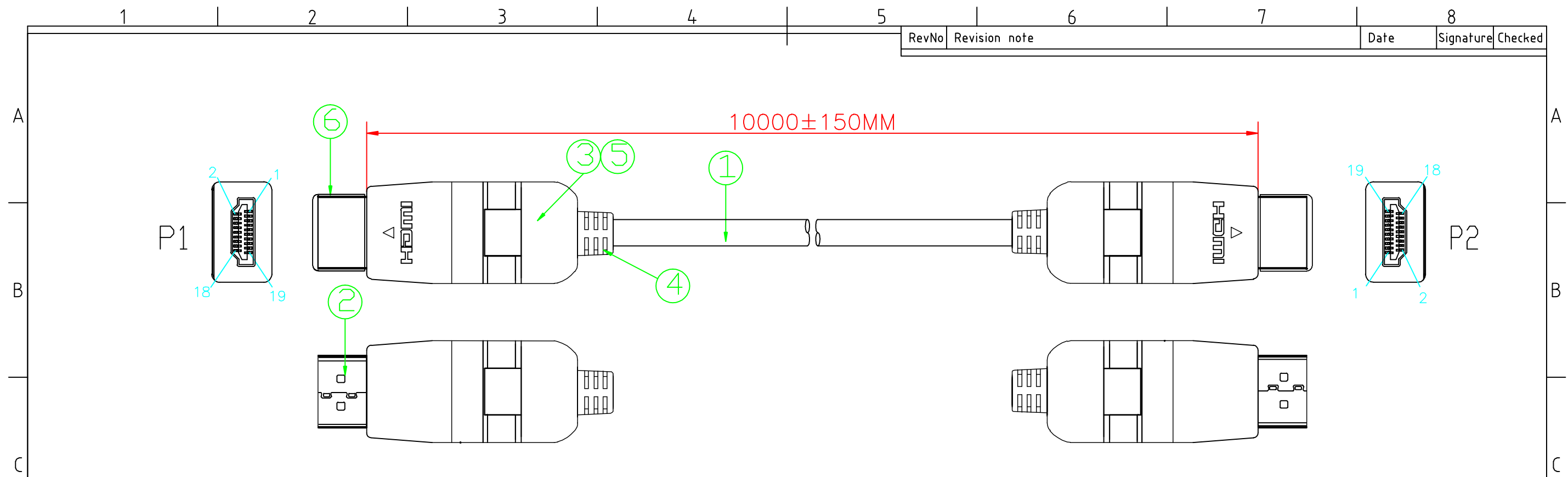
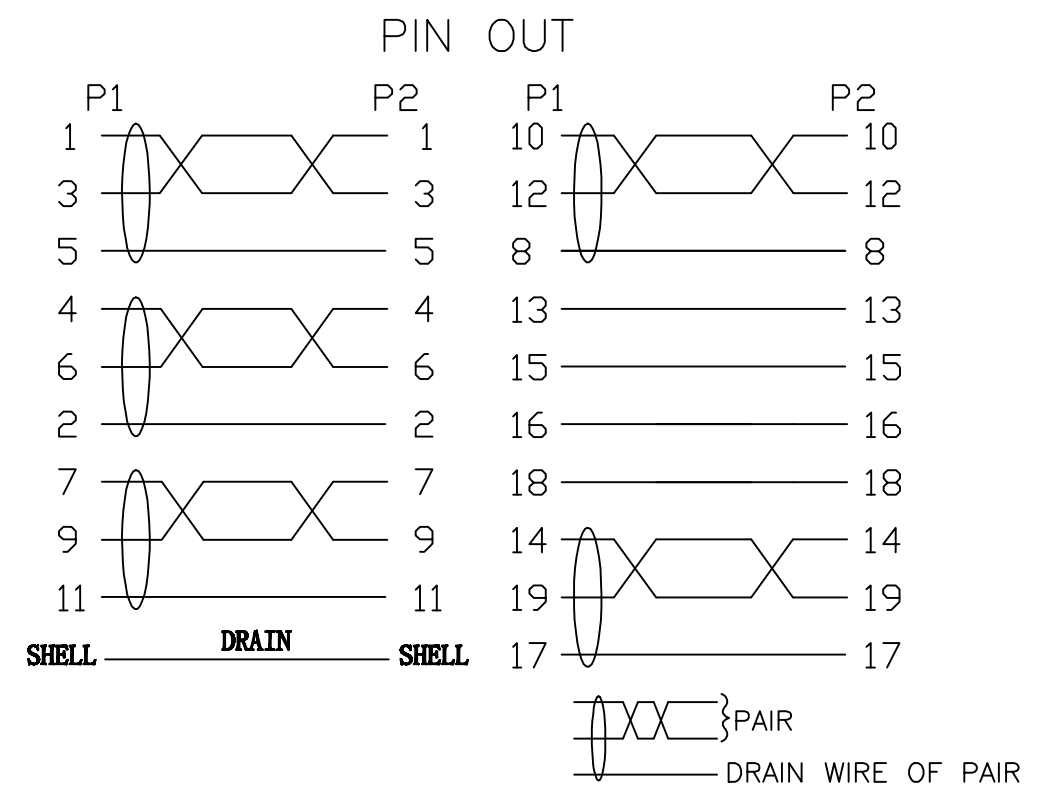


|       |               |      |           |         |
|-------|---------------|------|-----------|---------|
| RevNo | Revision note | Date | Signature | Checked |
|-------|---------------|------|-----------|---------|



NOTES:  
 1:100% short,open and miss wire test.  
 2:Insulation resistance:DC300V 10MΩ(Min)  
 Conduction resistance 5Ω(Max)  
 3:Use testing:1080P



|     |              |  |       |      |
|-----|--------------|--|-------|------|
| ⑥   | DUST CAP     | HDMI A/M DUST CAP,LDPE   | 2     | PCS  |
| ⑤   | HOOD         | ABS SHELL,COLOR:BLACK  | 2     | PCS  |
| ④   | OUTER MOLDED | BLACK 45P PVC  | 0.024 | KG   |
| ③   | INNER MOLDED | LDPE   | 0.024 | KG   |
| ②   | CONNECTOR    | HDMI 19PIN MALE,THE PIN GOLD PLATED,THE SHELL FOR GOLD PLATING | 2     | PCS  |
| ①   | CABLE        | (1P*28#+D+AL+MYLAR)*5C+4C*28#+ADB JACKET:BLACK PVC,OD:7.3±0.15 | 10000 | MM   |
| NO. | MATERIAL     | DESCRIPTIONG   | QTY.  | UNIT |

|             |            |   |                                    |                     |               |
|-------------|------------|---|------------------------------------|---------------------|---------------|
| Ltemref     | Quantity   | Title/Name,designation,material,dimension etc | Article No./Reference              |                     |               |
| Designed by | Checked by | Approved by - date<br>OTC 28.2013             | File name<br>HDMI 1.4 10M          | Date<br>OTC 28.2013 | Scale<br>FREE |
| ANGLE:      |            |   | HDMI 1.4 AM-AM 360 DEGREE ROTATION |                     |               |
| UNIT:MM     |            |   | 32 3657                            | Edition<br>1        | Sheet<br>1/1  |